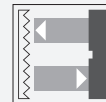


Retroreflective sensor RLK29-55/25/116-Set



- Robust, compact photoelectric sensor for single-beam gate protection
- Not sensitive to ambient light, even with energy saving lamps
- Tamper-proof, no operating controls
- Version for universal voltages
- Relay output
- Version with accessories in scope of delivery

Robust, compact, long range photoelectric sensors for detecting people, objects and vehicles



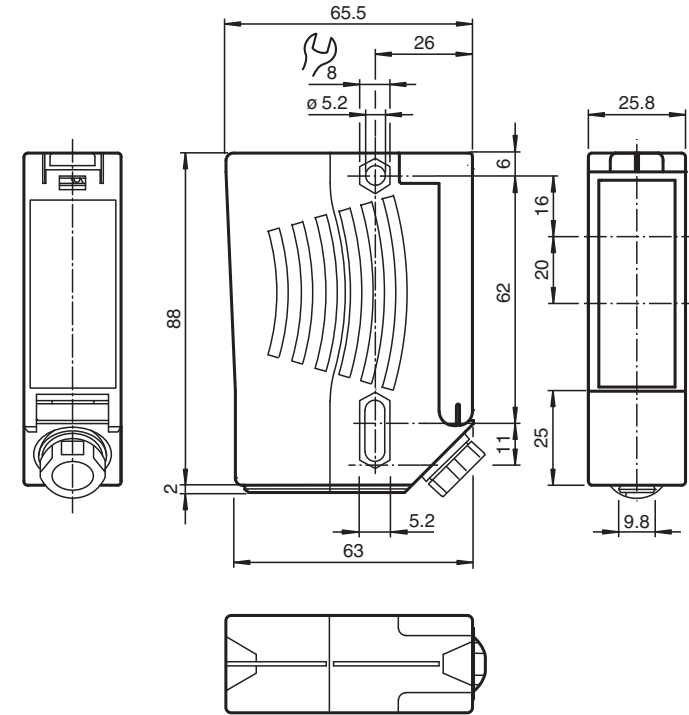
Function

Series 29 is a range of low-cost and, most importantly, reliable photoelectric sensors for monitoring industrial doors, elevators, and automatic gates. Their high degree of protection makes them the ideal solution for tasks outdoors and at thresholds, and in harsh environments. These "universal-voltage sensors" can be operated with any supply voltage from 24 V to 240 V, and with direct current or alternating current.

Application

- Monitoring closing edges of automatic industrial doors and elevators
- Monitoring the swing range of automatic gates
- Detecting and tracking objects in material handling

Dimensions



Technical Data

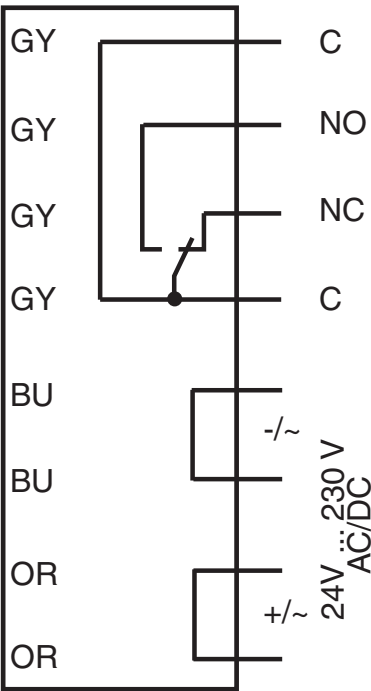
General specifications		
Effective detection range		0 ... 12 m
Reflector distance		0.04 ... 12 m
Threshold detection range		14 m
Reference target		H85-2 reflector
Light source		LED
Light type		modulated visible red light , 640 nm
Diameter of the light spot		approx. 35 mm at a distance of 12 m
Opening angle		± 1 °
Ambient light limit		90000 Lux
Accessories provided		reflector C110-2 , Mounting bracket with mounting materials
Functional safety related parameters		
MTTF _d		1460 a
Mission Time (T _M)		20 a
Diagnostic Coverage (DC)		0 %
Indicators/operating means		
Function indicator		LED red illuminates: when beam is free flashes: when level falls below function reserve off: when beam is interrupted
Electrical specifications		
Operating voltage	U _B	24 ... 230 V AC/DC
Ripple		10 %

Release date: 2022-08-03 Date of issue: 2022-08-03 Filename: 128118_eng.pdf

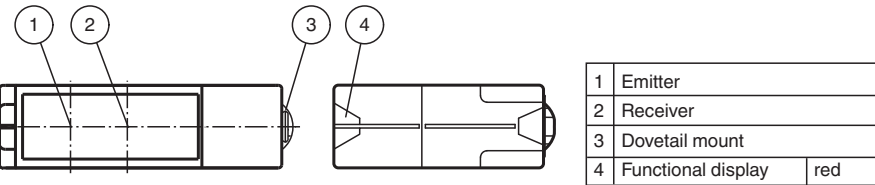
Technical Data

No-load supply current	I_0	$\leq 8.5 \text{ mA}$
Power consumption	P_0	0.2 W at 24 V DC , 1.8 W at 230 V AC 3 VA
Output		
Switching type		light-on
Signal output		Relay, 1 alternator
Switching voltage		230 V AC
Switching current		max. 2 A
Switching frequency	f	7 Hz
Response time		50 ms
Conformity		
Product standard		EN 60947-5-2
Approvals and certificates		
CE conformity		yes
EAC conformity		TR CU 020/2011 TR CU 004/2011
UL approval		cULus Listed Caution: This equipment is considered as open-type equipment. It must be mounted within an enclosure, that is suitably designed for protection against internal fire and personal injury resulting from accessibility to live parts according UL 508.
CCC approval		Certified by China Compulsory Certification (CCC)
Ambient conditions		
Ambient temperature		-20 ... 60 °C (-4 ... 140 °F)
Storage temperature		-20 ... 60 °C (-4 ... 140 °F)
Mechanical specifications		
Degree of protection		IP67
Connection		terminal compartment
Material		
Housing		Plastic ABS, flame resistant
Optical face		Plastic pane
Mass		approx. 200 g
Note		Safety fuse $\leq 2 \text{ A}$ (slow-blow) according to IEC 60127-2 Sheet 1 Recommendation: after a short circuit, check that the device is functioning correctly.

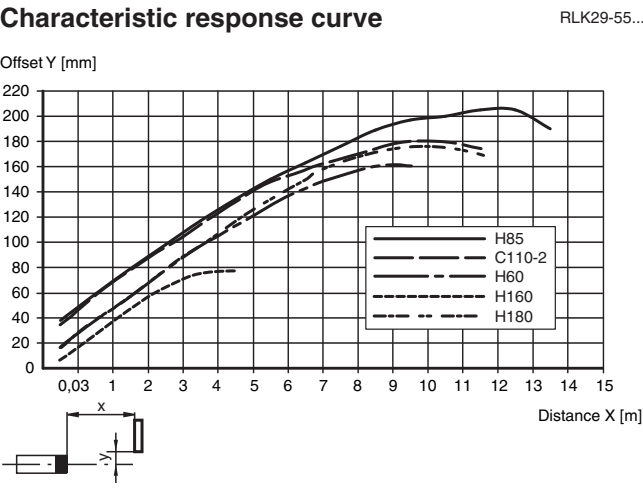
Connection Assignment



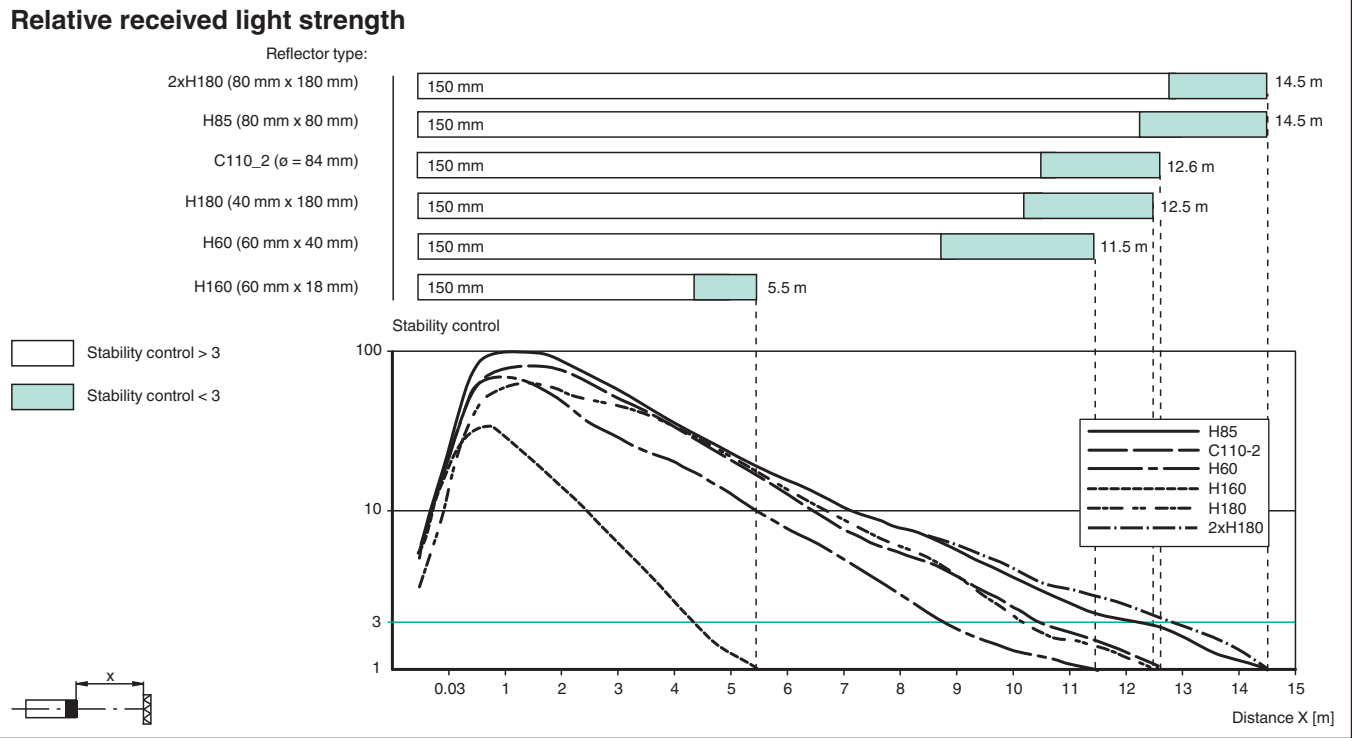
Assembly







Characteristic Curve



Characteristic Curve



Accessories

	OMH-RLK29	Mounting bracket
	OMH-RLK29-HW	Mounting bracket for rear wall mounting
	OMH-RLK29-HW-120	Mounting bracket for rear wall mounting
	OMH-21	Mounting bracket: mounting aid for sensors in the RL* series